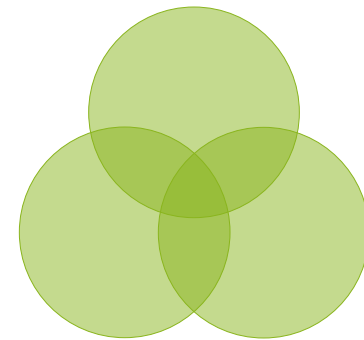




TARGETED RESEARCH 

agriculture



food

environment

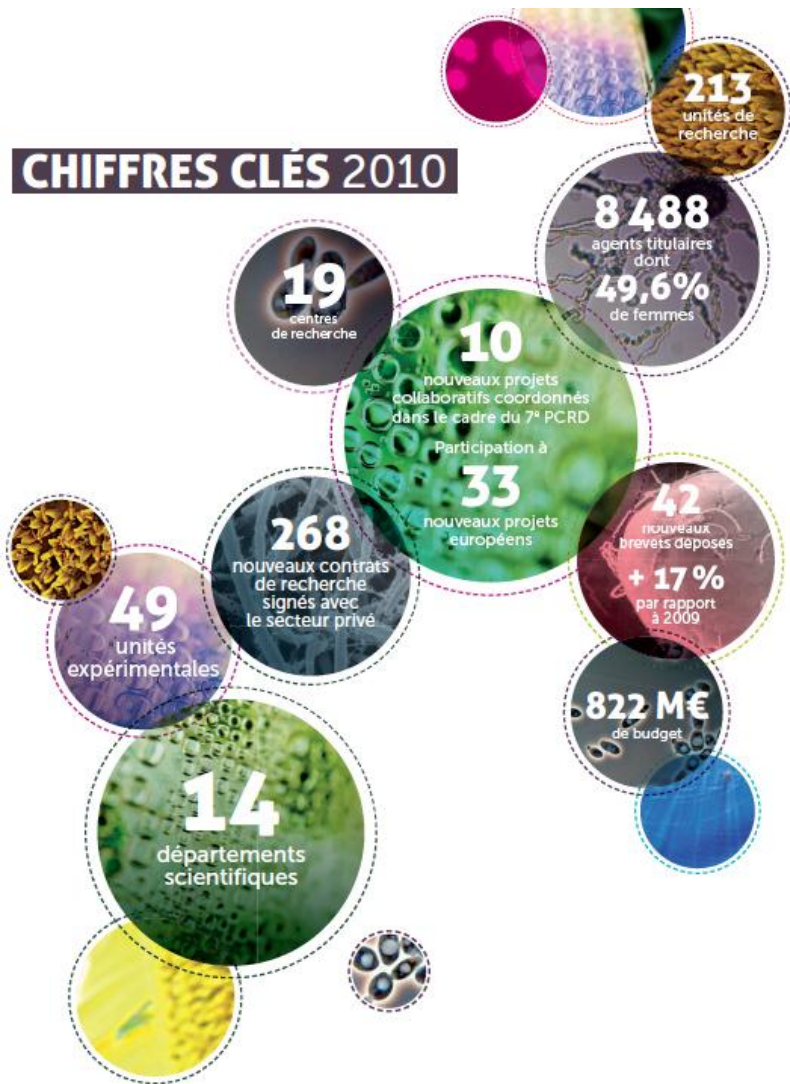


INRA, an international public research institute



- ❖ **INRA is a public scientific and technological establishment (EPST)** (joint authority of the Ministry of Higher Education and Research and the Ministry in charge of Agriculture)
- ❖ **Goals :**
 - to produce and disseminate scientific knowledge and innovation
 - to contribute to education and training, to promote scientific and technical culture and participate in the science/society debate
 - through its expertise, to advise decision-making by public and private sector actors

CHIFFRES CLÉS 2010

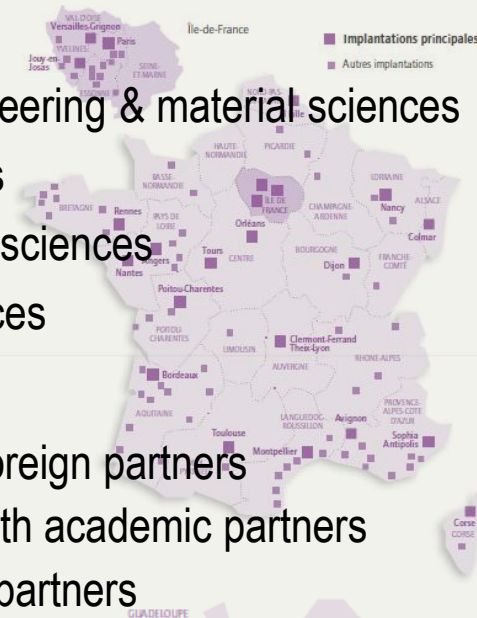


INRA 2010, key figures

A scientific community of around 12,000 persons all over France

Global scientific profile (researchers)

- 68 % Life sciences
- 12 % Environmental, engineering & material sciences
- 8 % Biotechnical sciences
- 8 % Economic and social sciences
- 4 % Computational sciences



Partnerships

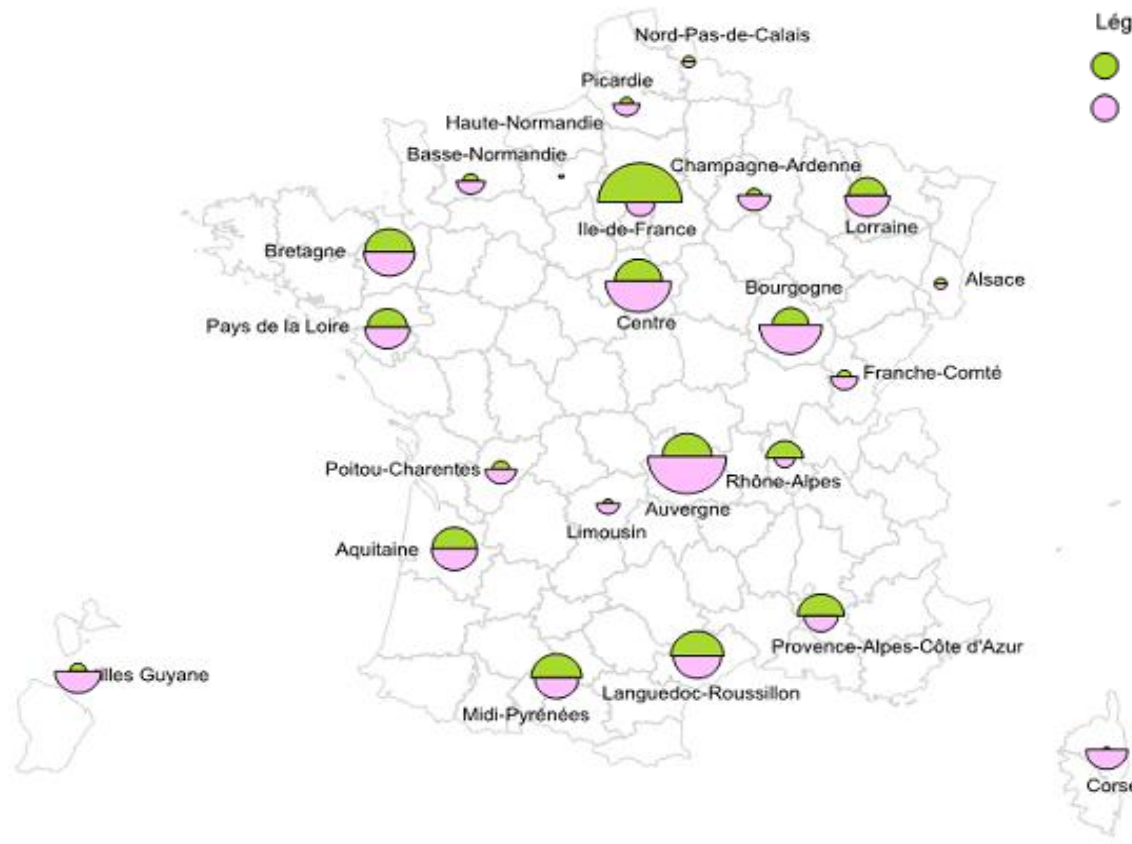
- 45 % of publications with foreign partners
- 50 % of research results with academic partners
- 20 % with socio-economic partners
- 15 % of results for anticipation, knowledge transfer and decision-making information
- 21% of external resources

14 research divisions ensure scientific management



- Nutrition, Chemical Food Safety and Consumer Behaviour (ALIMH)
- Plant Biology (BV)
- Science and Process Engineering of Agricultural Products (CEPIA)
- Environment and Agronomy (EA)
- Forest, Grassland and Freshwater Ecology (EFPA)
- Animal Genetics (GA)
- Plant Breeding and Genetics (GAP)
- Applied Mathematics and Informatics (MIA)
- Microbiology and the Food Chain (MICA)
- Animal Physiology and Livestock Systems (PHASE)
- Animal Health (SA)
- Science for Action and Sustainable Development (SAD)
- Social Sciences, Agriculture and Food, Rural Development and Environment (SAE2)
- Plant Health and Environment (SPE)

Contribution of research centers to INRA WoS registered publications

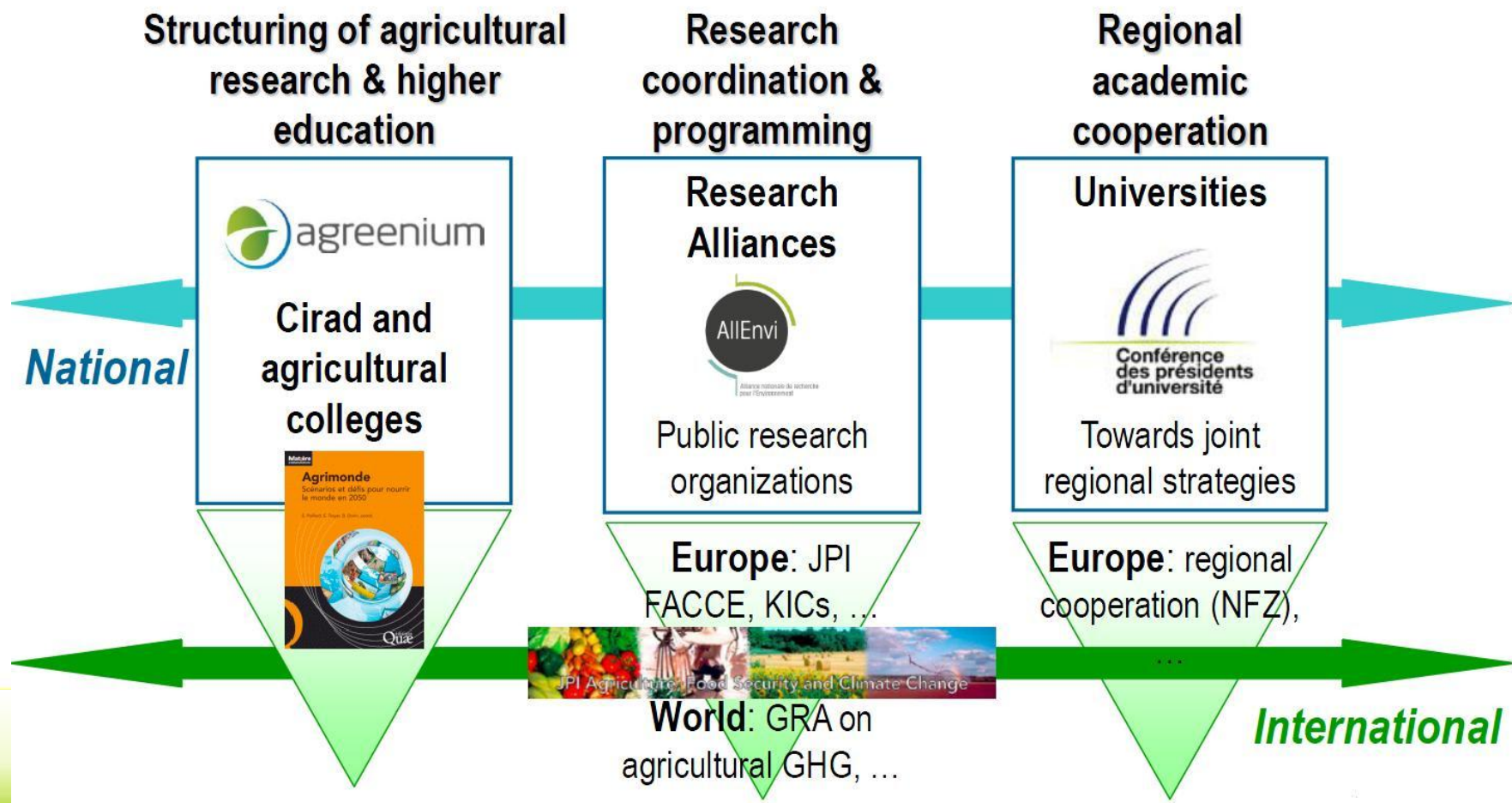


Légende :

- part de publication Inra (en compte de présence)
- part Inra des publications régionales (en compte de présence)

données Thomson Reuters, traitement OST/Inra 2011

National academic partnership: a three-pronged strategy with international extensions





DOCUMENT D'ORIENTATION
INRA 2010 - 2020

une science
pour l'impact

INSTITUT NATIONAL DE LA RECHERCHE AGRONOMIQUE


The strategic plan INRA 2010-2020 “Targeted research”


http://www.international.inra.fr/the_institute/new_scientific_priorities_for_2010_2020





Global food security and global changes

- 
- Integration of the economic, social and environmental performances of agriculture.
 - Development of healthy and sustainable food systems.
 - Attenuation of the greenhouse effect and the adaptation of agriculture and forestry to climate change.
 - Valorisation of biomass for chemicals and energy.



Life and environmental sciences,
economic and social sciences



Agro-ecology
Predictive approaches for biology

INRA metaprograms

- **Launched in 2011**
 - Sustainable management of crop health
 - Adaptation of agriculture and forestry to climate change
 - Meta-omics of microbial ecosystems
- **Launched in 2012**
 - Genomic selection
 - Integrated management of animal health
 - Determinants and impacts of the diet: interactions and transitions
- ***Under discussion, to be launched in 2013***
 - *Ecosystem Services, Agriculture and Forest*
 - *Transitions to Global Food Security*



The Inra research centre of Rennes

Brittany – Lower Normandy

Promoting sustainable agri-food systems



ALIMENTATION
AGRICULTURE
ENVIRONNEMENT



Implantations



ALIMENTATION
AGRICULTURE
ENVIRONNEMENT



A decorative graphic at the top of the slide, featuring a circular pattern of blue and white chevron-like shapes. The text "Key figures" is centered within this pattern in a bold, blue, sans-serif font.

Key figures

- **10** implantations in Brittany and Lower-Normandy
- **4th Inra research centre** - one thousand people employed, 700 permanents, 300 of them being researchers, ingeneers or teacher/researchers
- **21 research and experimental units** - 7 of them are joint research units (UMR) with Agrocampus Ouest, University of Rennes I, University of Caen – 6 of them are experimental units

Infrastructures



and access to nationally labelled environmental observatories

ALIMENTATION
AGRICULTURE
ENVIRONNEMENT

INRA

A close involvement in higher education

- > An historical and active partnership with **Agrocampus Ouest** (with ENSAR since 1946)
 - > A strong implying into the **training of agronomist engineers** in Rennes
 - > Responsibilities in the **programm definition of degrees** performed by Agrocampus Ouest and the Univesrity of Rennes I
- > A formal partnership with the **European University of Brittany (UEB)** and with the **University of Caen Basse Normandie**
- > A major involvment in the Doctorate school «**Ecole doctorale Vie-Agro-Santé**» lead by Agrocampus Ouest and the University of Rennes I

A main aim of scientific investigation

Sustainability of agri-food systems in high density production areas

Natural resources

Economy

Biodiversity

Nutrition-Health

Environnement

Plant and Animal
Production systems

Product quality

ALIMENTATION
AGRICULTURE
ENVIRONNEMENT

INRA

Five thematic fields in our 2012-2016 project

- **Integrative animal biology, agro-ecology and sustainable management of animal production (256p)**
- **Integrative plant biology and sustainable management of plant health (300p)**
- **Management of terrestrial and aquatic agro-ecosystems (207p)**
- **Elaboration and quality of animal products, nutrition and Health (218p)**
- **Farms, markets and public policies related to agriculture and environment (36p)**

Three main long-term objectives

for INRA Center of Rennes

- **To reinforce these 5 thematic fields in an inter-regional vision**
- **To promote inter-disciplinary and integrated approaches on the sustainability of agri-food systems**
- **To consolidate and open wider our experimental facilities (UE, PF, ORE)**

All this, with the ambition to be readable and attractive for international partners

ALIMENTATION
AGRICULTURE
ENVIRONNEMENT





The Inra research centre of Rennes

Brittany – Lower Normandy

www.rennes.inra.fr



ALIMENTATION
AGRICULTURE
ENVIRONNEMENT

