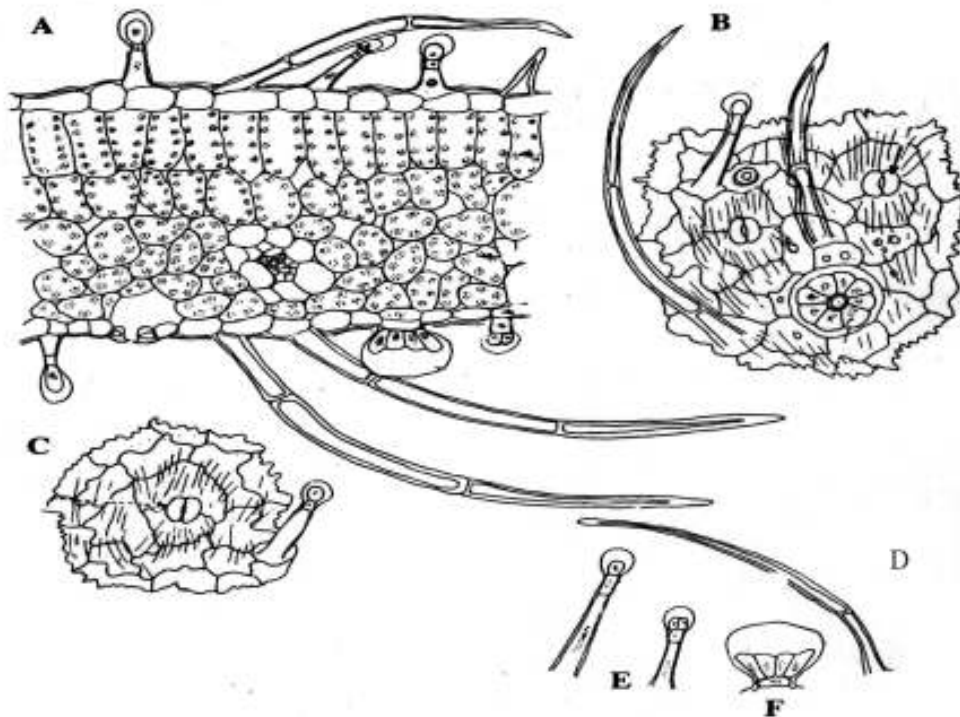
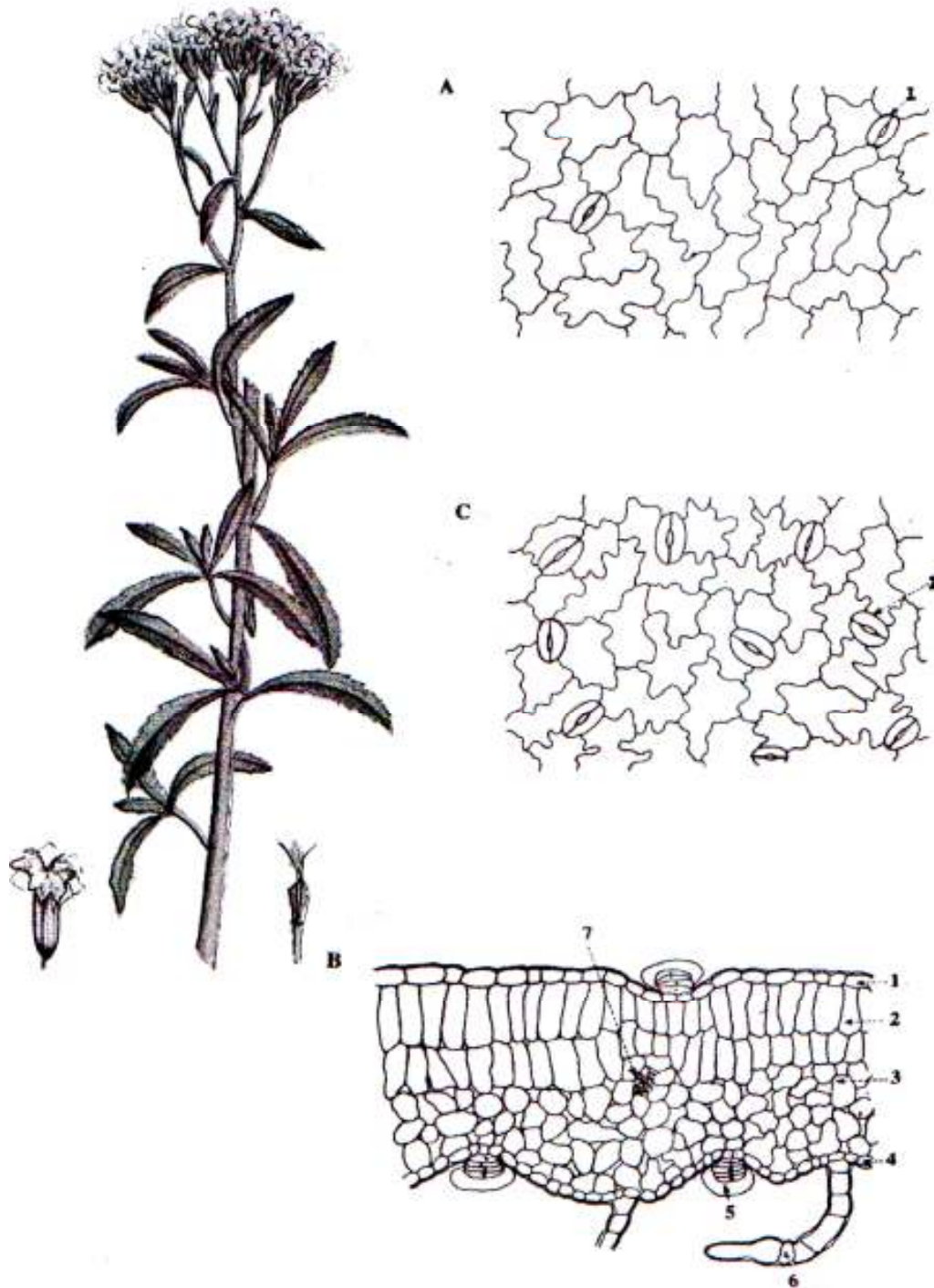


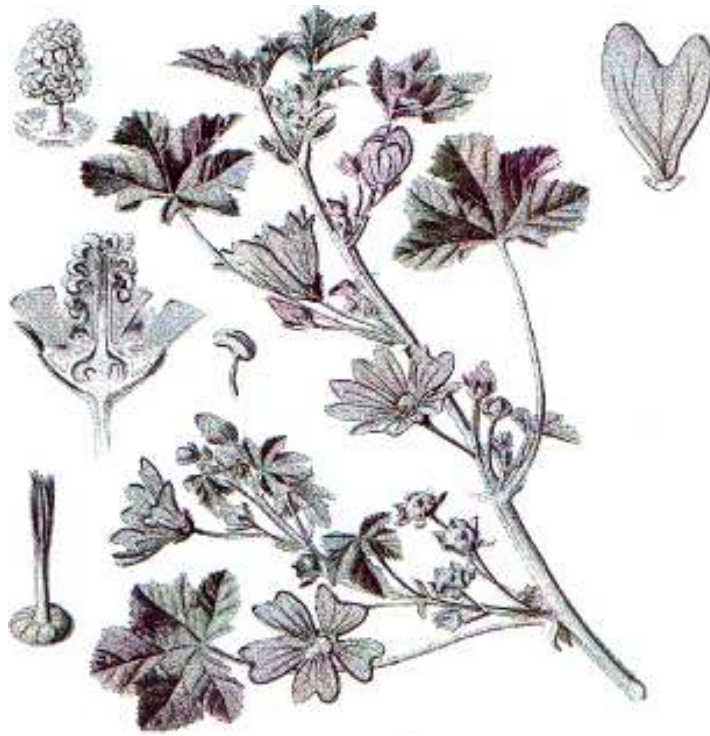
## FÁRMACOS PULVERIZADOS (1)

### 1. Sálvia - folhas de *Salvia officinalis* L., Lamiaceae

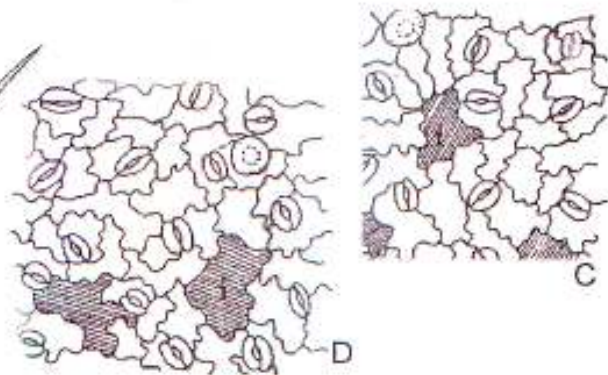
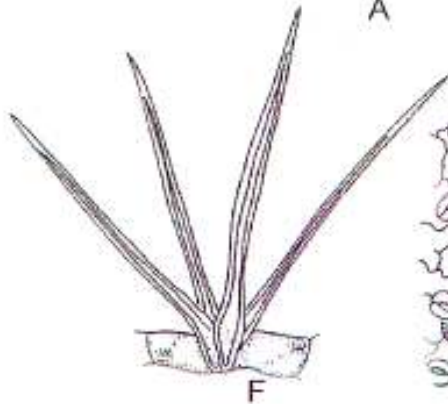
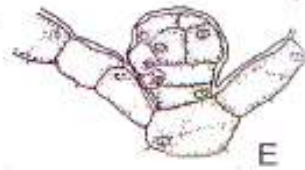
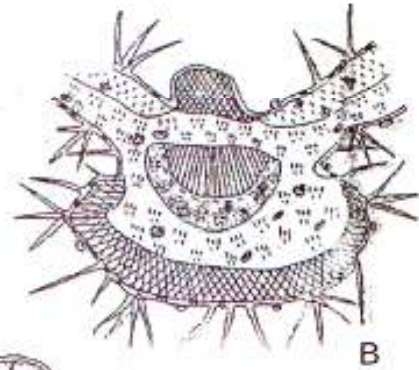
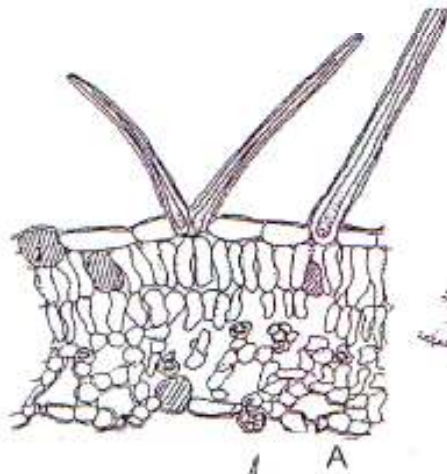


2. **Estévia** - folhas de *Stevia rebaudiana* Bert., Asteraceae





3. **Malva** - folhas de  
*Malva sylvestris* L.,  
Malvaceae



4. **Mate** - folhas de  
*Ilex paraguariensis* St. Hil.,  
Aquifoliaceae

