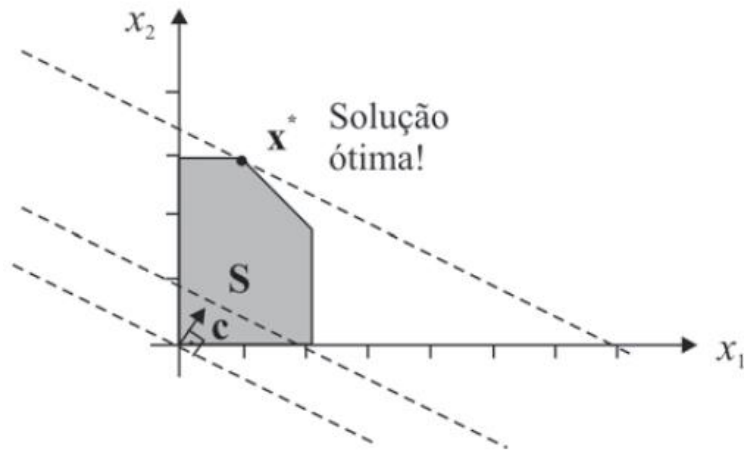


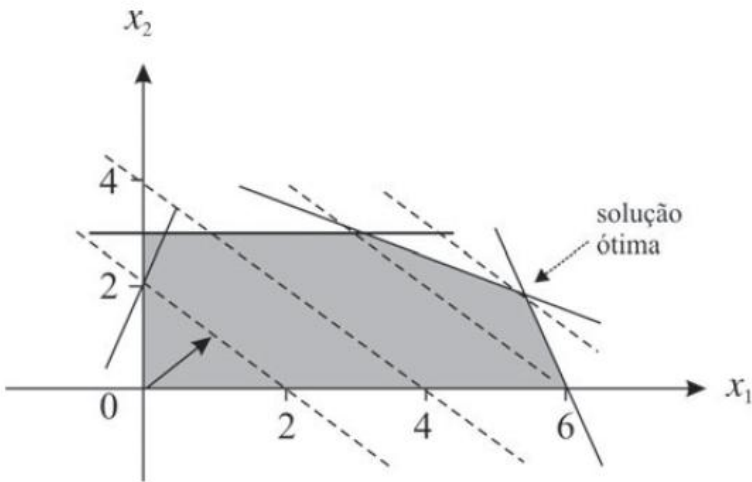
Respostas

1 -



$$\mathbf{x}^* = \begin{bmatrix} x_1 \\ x_2 \end{bmatrix} = \begin{bmatrix} 1 \\ 3 \end{bmatrix}.$$

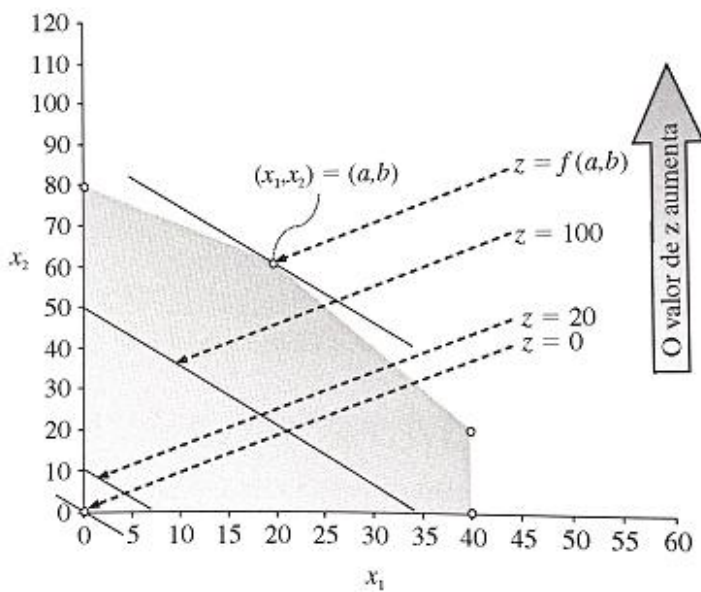
2-



$$f(\mathbf{x}^*) = 7,2.$$

$$\mathbf{x}^* = \begin{bmatrix} x_1 \\ x_2 \end{bmatrix} = \begin{bmatrix} 5,4 \\ 1,8 \end{bmatrix}$$

3-



$$\begin{aligned} x_1^* &= 20 \\ x_2^* &= 60 \\ Z^* &= 180 \end{aligned}$$