



## Patologia do Sistema Digestório 1ª parte

Prof. Ass. Dr. Raimundo Alberto Tostes

---

---

---

---

---

---

---

---

## Patologia do Sistema Digestório Parte 1

*Afecções da Cavidade Oral*  
Tonsilas      Esôfago  
Estômago      Pré-Estômagos

---

---

---

---

---

---

---

---

### *Alterações Inflamatórias da Cavidade Oral*

#### *Estomatites*

#### ↳ **Estomatites de Origem Imunológica**

➤ Úlcera Eosinofílica

➤ Estomatites Penfigóides

---

---

---

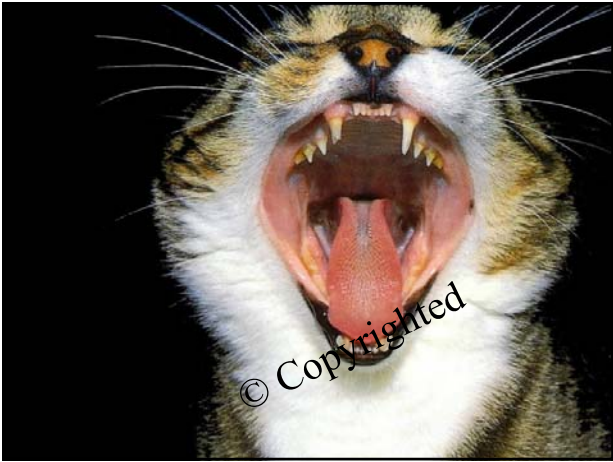
---

---

---

---

---



---

---

---

---

---

---

---

---



---

---

---

---

---

---

---

---

**Alterações Inflamatórias da Cavidade Oral**

↳ **Estomatites da I.R.C.**

➤ **Estomatite Urêmica**

---

---

---

---

---

---

---

---

**Alterações Inflamatórias da Cavidade Oral**

**↳ Estomatites Profundas**

- **Necrobacilose** – *Fusobacterium necrophorum*
- **Traumáticas (corpos estranhos)**

---

---

---

---

---

---

---

---



---

---

---

---

---

---

---

---



---

---

---

---

---

---

---

---

## Alterações Inflamatórias da Cavidade Oral

### ↳ Estomatites Infecciosas

#### ↳ Complexo Estomatite Vesicular Bovina

- Febre Aftosa - *Aphthovirus*
- Diarréia Viral Bovina - *Pestivirus*
- Rinotraqueíte Infecciosa Bovina
- Febre Catarral Maligna - *Herpesvirus*
- Estomatite Vesicular - *Vesiculovirus*
- Língua Azul - *Orbivirus*

---

---

---

---

---

---

---

---



---

---

---

---

---

---

---

---

## Alterações Inflamatórias da Cavidade Oral

### ↳ Glossites

- Actinobacilose  
*Actinobacillus lignieresii* G<sup>-</sup>
- Actinomicose  
*Actinomyces bovis* G<sup>+</sup>
- Traumas e Corpos Estranhos

---

---

---

---

---

---

---

---



---

---

---

---

---

---

---

---

### **Neoplasias da Cavidade Oral**

- ⇒ Papiloma
- ⇒ Épulis ou Epúlides
- ⇒ Mastocitoma

**Neoplasia mais comum da C.O. do cão:**  
⇒ Melanoma

**Neoplasia mais comum da C.O. do gato:**  
⇒ Carcinoma de Células Escamosas

---

---

---

---

---

---

---

---

### **Neoplasias da Cavidade Oral**

**Neoplasias raras da cavidade oral em animais domésticos:**

**Tumores Odontogênicos:**

- ⇒ Ameloblastomas
- ⇒ Odontomas

---

---

---

---

---

---

---

---

## Neoplasias da Cavidade Oral

⇒ O **Carcinoma Epidermóide** é a neoplasia mais comum da cavidade oral de gatos

⇒ O **Melanoma** é a neoplasia mais comum da cavidade oral de cães

---

---

---

---

---

---

---

---



---

---

---

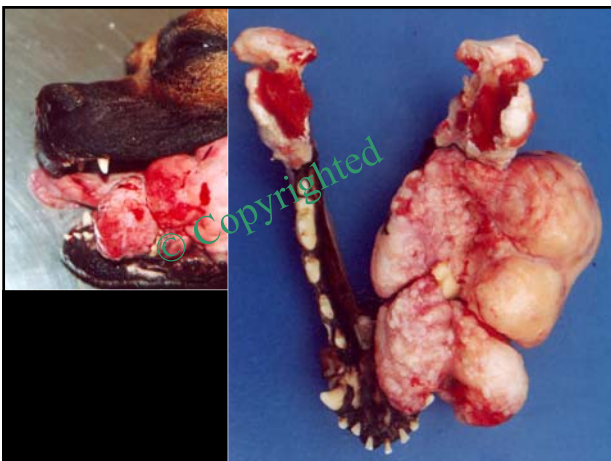
---

---

---

---

---



---

---

---

---

---

---

---

---



---

---

---

---

---

---

---

---



---

---

---

---

---

---

---

---



---

---

---

---

---

---

---

---



---

---

---

---

---

---

---

---

**Alterações das Tonsilas**

---

- ⇒ Inflamação (tonsilite)
- ⇒ Reatividade a processos infecciosos
- ⇒ Neoplasias

*Linfoma*

---

---

---

---

---

---

---

---



---

---

---

---

---

---

---

---



## Alterações do Esôfago

### ⇒ Esofagites

- Erosivas
- Ulcerativas
- Refluxo

---

---

---

---

---

---

---

---



---

---

---

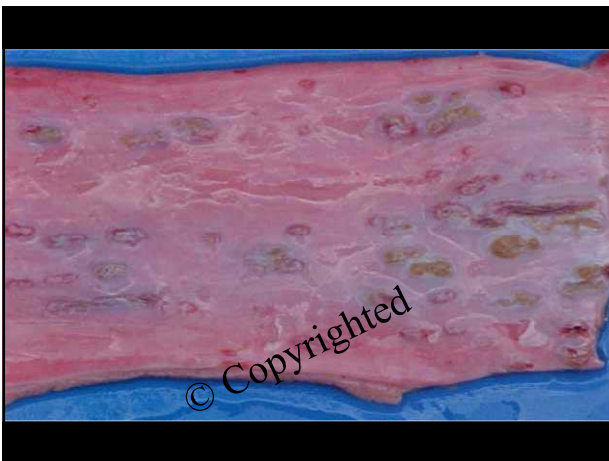
---

---

---

---

---



---

---

---

---

---

---

---

---



---

---

---

---

---

---

---

---

## Alterações do Esôfago

### ⇒ Obstrução

#### Pontos críticos para obstrução

- Sobre a laringe
- Entrada do tórax
- Sobre o coração
- Entrada do diafragma

---

---

---

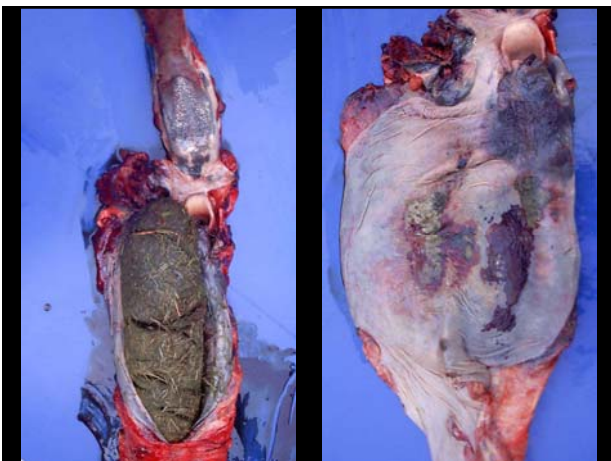
---

---

---

---

---



---

---

---

---

---

---

---

---

## Alterações do Esôfago

### ⇒ Estenose

P.A.A.D.  
Retrações cicatriciais

### ⇒ Perfuração

Corpos Estranhos  
Iatrogenia

---

---

---

---

---

---

---

---



---

---

---

---

---

---

---

---

## Alterações do Esôfago

### ⇒ Megaesôfago

→ Congênito

→ Adquirido



---

---

---

---

---

---

---

---



---

---

---

---

---

---

---

---

**Alterações do Esôfago**

- ⇒ **Parasitoses**
  - *Espirocercose – Spirocercia lupi*
- ⇒ **Neoplasias**
  - **Papilomatose**
    - Viral
    - *Pteridium aquilinum*
  - **Fibrossarcoma**
    - Associados ao parasitismo por *Spirocercia lupi*

---

---

---

---

---

---

---

---



---

---

---

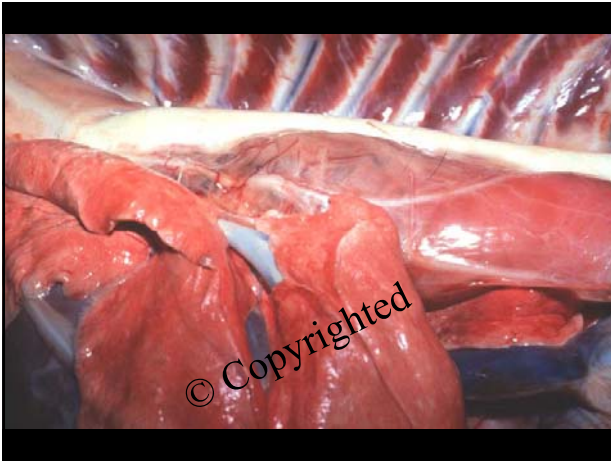
---

---

---

---

---



---

---

---

---

---

---

---

---



---

---

---

---

---

---

---

---

## Patologia dos Pré-Estômagos

### ⇒ Dilatação Rumenal

➤ *Timpanismo Primário*

➤ *Timpanismo Secundário*

---

---

---

---

---

---

---

---



---

---

---

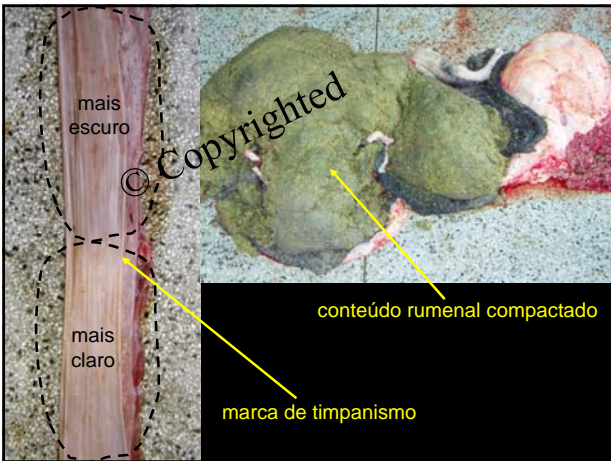
---

---

---

---

---



---

---

---

---

---

---

---

---

**Patologia dos Pré-Estômagos**

---

- ⇒ **Corpos Estranhos**
- ⇒ **Reticulite Traumática**
  - **Reticulo-Peritonite**
  - **Reticulo-Pericardite**

---

---

---

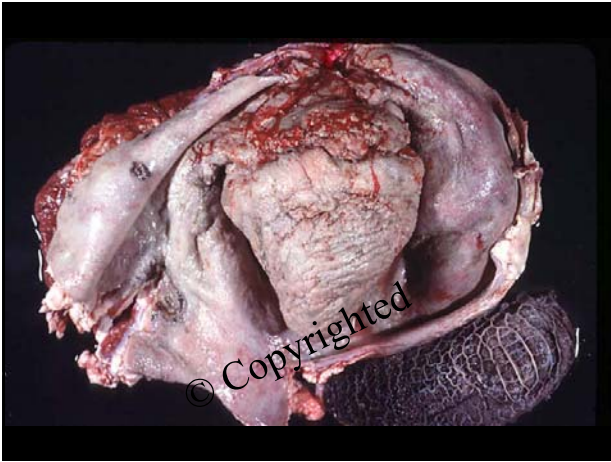
---

---

---

---

---



---

---

---

---

---

---

---

---



---

---

---

---

---

---

---

---

## Patologia dos Pré-Estômagos

⇒ **Corpos Estranhos**

⇒ **Rumenite**

➤ *Rumenite/Acidose*

➤ *Ingestão excessiva de grãos*

➤ *Necrobacilose*

➤ *Febre Aftosa*

---

---

---

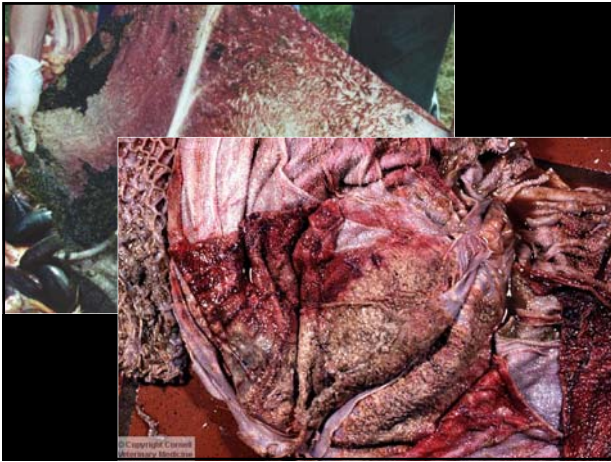
---

---

---

---

---



---

---

---

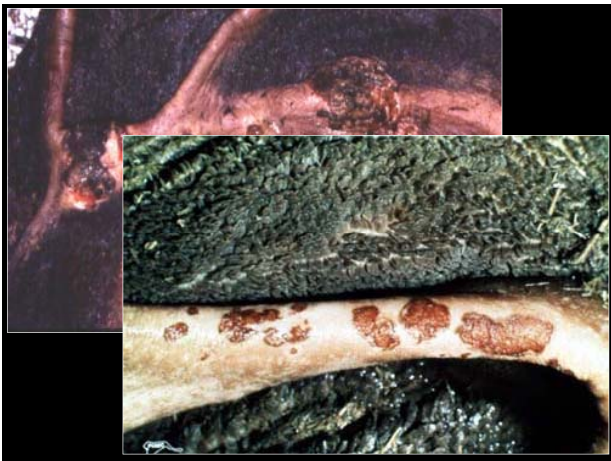
---

---

---

---

---



---

---

---

---

---

---

---

---

**Patologia dos Pré-Estômagos**

---

⇒ **Parasitoses**

⇒ **Neoplasias**

- *Lipoma*
- *Papiloma*

---

---

---

---

---

---

---

---



# Alterações do Estômago

---

---

---

---

---

---

---

---

---

## Patologia do Estômago

---

- ⇒ Estômago e Abomaso
- ⇒ Regulação da função gástrica
- ⇒ Barreira mucosa gástrica
- ⇒ Resposta da mucosa à agressão
  - *Atrofia das células parietais*
  - *Hiperplasia e metaplasia da mucosa*

---

---

---

---

---

---

---

---

## Dilatação Gástrica e Deslocamentos

---

- ⇒ **Dilatação/Vôlvulo Gástrico em Cães**
  - ⇒ *Comum nas raças de grande porte*
  - ⇒ *Patogenia*
  - ⇒ *Conseqüências*

---

---

---

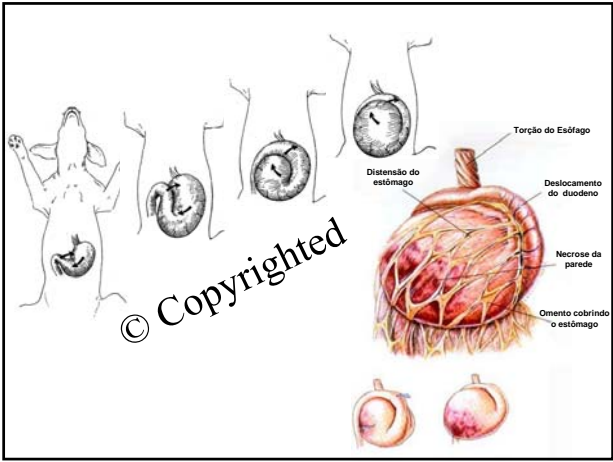
---

---

---

---

---




---

---

---

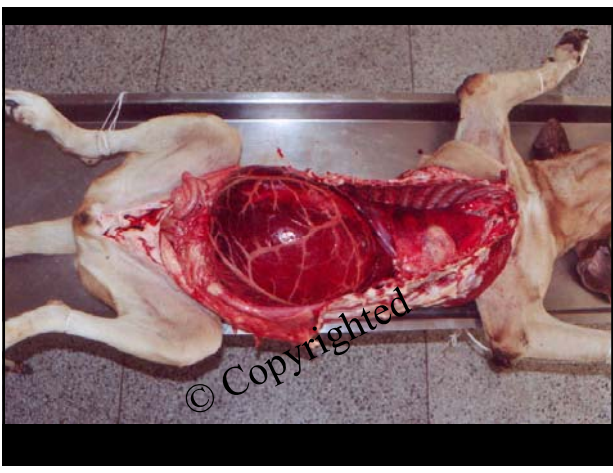
---

---

---

---

---




---

---

---

---

---

---

---

---




---

---

---

---

---

---

---

---

## Dilatação Gástrica e Deslocamentos

⇒ Dilatação Gástrica em Equinos



---

---

---

---

---

---

---

---

---

---

---

---

---

---

---

---

---

---

---

---

---

---

---

---



---

---

---

---

---

---

---

---

## Dilatação Gástrica e Deslocamentos

### ⇒ Deslocamento Abomasal

- à esquerda (90%)
- à direita (10%)

---

---

---

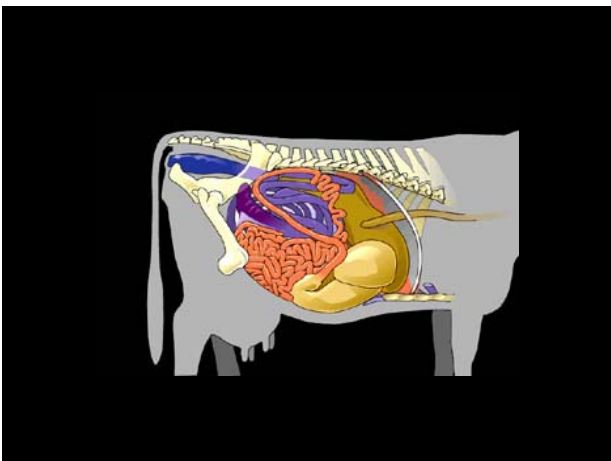
---

---

---

---

---



---

---

---

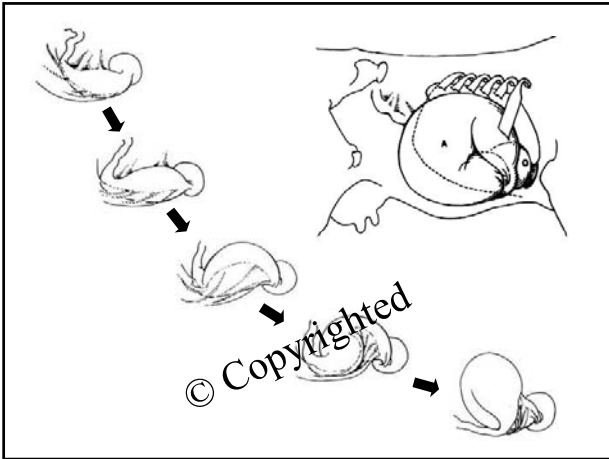
---

---

---

---

---




---

---

---

---

---

---

---

---




---

---

---

---

---

---

---

---

**Alterações Inflamatórias no Estômago**

---

⇒ **Gastrite Aguda**

⇒ **Gastrite Crônica**

- *gastrite crônica superficial*
- *gastrite crônica atrófica*
- *gastrite crônica hipertrófica*

---

---

---

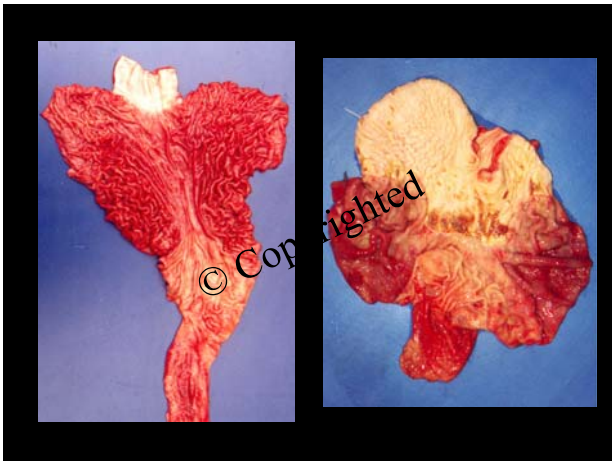
---

---

---

---

---



---

---

---

---

---

---

---

---



---

---

---

---

---

---

---

---

**Alterações Inflamatórias no Estômago**

---

⇒ **Gastrite Parasitária**

|         |                                   |
|---------|-----------------------------------|
| Equinos | <i>Gasterophilus nasalis</i>      |
|         | <i>Gasterophilus intestinalis</i> |

---

---

---

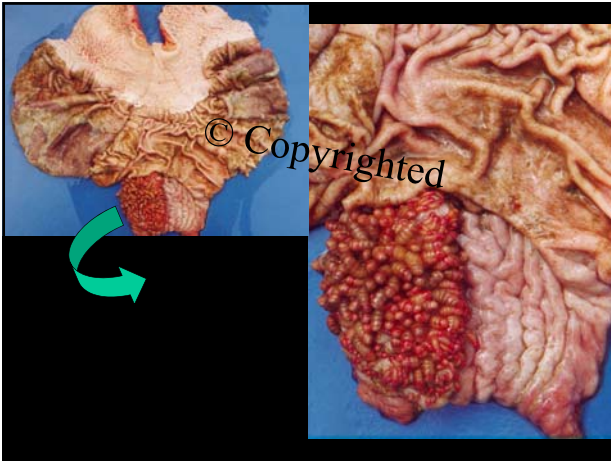
---

---

---

---

---



---

---

---

---

---

---

---

---

**Alterações Inflamatórias no Estômago**

⇒ **Gastrite urêmica**

➤ *gastrite hemorrágica difusa severa*

Atenção para os sinais →

- Dor abdominal
- Apatia
- Anorexia
- Halitose
- Emese
- Gastrorragia

---

---

---

---

---

---

---

---



---

---

---

---

---

---

---

---

## Alterações Inflamatórias no Estômago

### ⇒ Úlceras Gástricas/Gastroduodenais

- ▷ em cães
- ▷ em suínos
- ▷ em eqüinos

### ⇒ Perfuração Gástrica

---

---

---

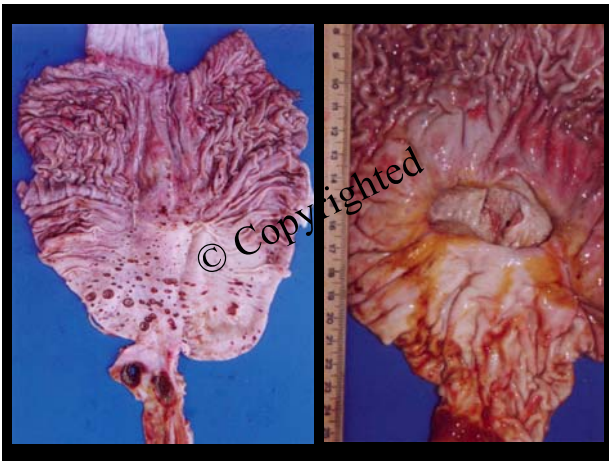
---

---

---

---

---



---

---

---

---

---

---

---

---

## Abomasites

- ⇒ Úlceras Abomasais
- ⇒ Abomasite Micótica
- ⇒ Abomasite Parasitária

*Haemonchus contortus*  
*Cooperia sp*

---

---

---

---

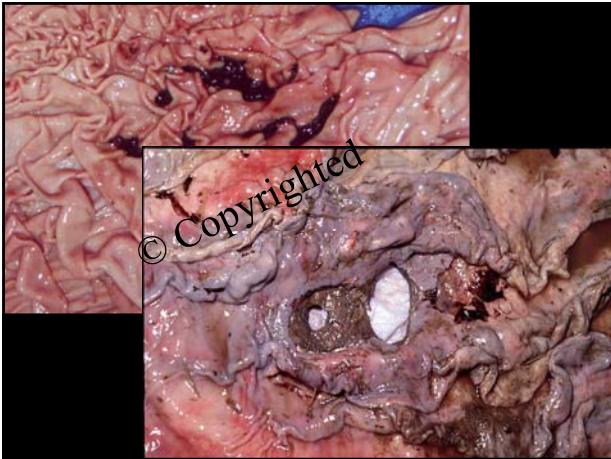
---

---

---

---





---

---

---

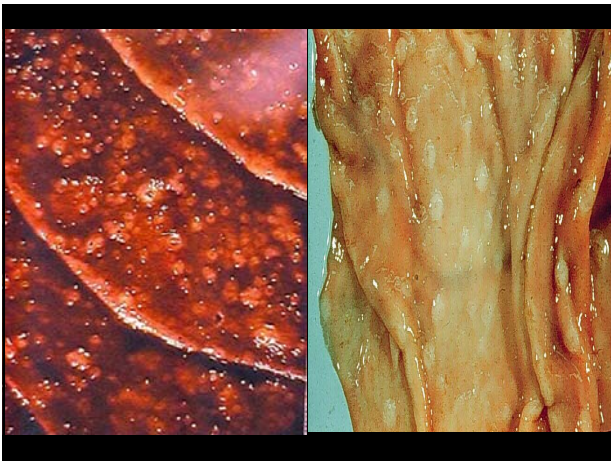
---

---

---

---

---



---

---

---

---

---

---

---

---

**Neoplasias do Estômago**

⇒ **Adenocarcinoma gástrico**  
*Comum em humanos*  
*Raro em animais domésticos*

⇒ **Mastocitoma**

⇒ **Linfoma**  
*Predisposição racial: Boxer*

---

---

---

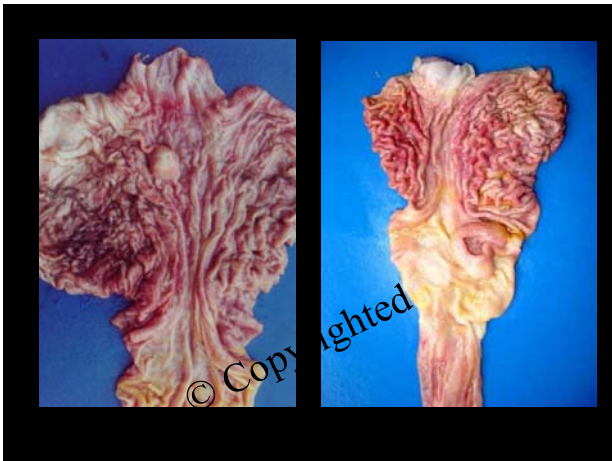
---

---

---

---

---



---

---

---

---

---

---

---

---



---

---

---

---

---

---

---

---

Material usado exclusivamente para fins didáticos, permitida a reprodução, desde que citadas as fontes.

---

---

---

---

---

---

---

---